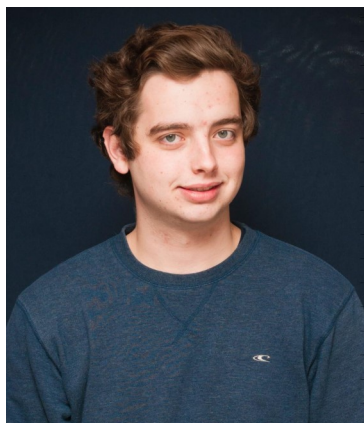


# 2016-17 KICF ANNUAL REPORT



## KICF Recognition Scholarship

In 1995, KICF established a scholarship to honor and recognize the donors who have given to KICF for forty or more years. This year's recipient is Tyler Bade who attends Manhattan Christian College.

### TYLER BADE

**Manhattan Christian College**

Class of 2017

Major: Pastoral Ministry

GPA: 4.0

*"Through the encouragement of the Manhattan Christian College community, I have grown personally and professionally. I have been challenged to not sit idly by as the world turns, but to run with it. I have been challenged to grow through class discussion and challenged to grow mentally and seek the truth in all situations. I am so thankful for all MCC has done and will continue to do for me."*

## President's Message

KICF has been serving the Kansas' independent, accredited, non-profit colleges and universities since 1952. The Fund was created in that year to encourage and facilitate financial support from corporations, small businesses and individuals for the missions of our member colleges.

The 2015-16 school year again added to this remarkable legacy of generous support as KICF received and distributed to our colleges \$112,656—in the form of unrestricted support for all 19 colleges' programs—and in the form of support targeted to specific programs and institutions that match donors' special interests.

I join with the more than 24,000 students and 4,400 faculty and staff of these colleges in thanking you for your support.

Your support also helps the state of Kansas. According to the economic research company EMSI, Kansas' non-profit colleges and generate more than \$980 million in income for the state each year, in large part because of the skills and character traits with which our students graduate.

Sincerely,



Matt Lindsey  
KICF President

## Description & Purpose

KICF develops, promotes, and directs unified approaches to selected corporations, foundations, and individuals for financial support of our member institutions. KICF is a nonprofit, 501 (c) (3) Kansas corporation. Copies of the IRS tax determination and the independent annual audit are available upon request.

Two- and four-year privately controlled non-profit institutions of higher education comprise KICF. All 19 member colleges and universities are accredited by the Higher Learning Commission of the North Central Association of Colleges and Postsecondary Schools.



## Donors

Anonymous*	
Berry Foundation*	Wichita KS
Capitol Federal Foundation*	Topeka KS
Cecil R. & Carol L. Miller	Overland Park KS
Citizens State Bank*	Cheney KS
Denison State Bank*	Holton KS
<b>DeVore Foundation, Inc.</b>	Wichita KS
Evco Wholesale Food Corporation*	Emporia KS
<i>First National Bank of Hutchinson</i>	Hutchinson KS
<i>First State Bank</i>	Ransom KS
George K. Baum Foundation*	Kansas City MO
Gilmore & Bell, P.C.	Kansas City MO
<i>Henry E. Wurst Family Foundation</i>	Kansas City MO
Hubco, Inc.*	Hutchinson KS
Kansas Philanthropies, Inc.*	Hutchinson KS
<b>Lario Oil &amp; Gas Company</b>	Wichita KS
Lee & Marlene Phillips	Wichita KS
Legacy Bank*	Colwich KS
<i>Maud Wyatt Educational Trust</i>	Wichita KS
Orscheln Industries Foundation, Inc.*	Moberly MO
<i>Parmelee Foundation</i>	Lenexa KS
<i>Paul Uhlmann, Jr. &amp; Elizabeth and Paul Uhlmann III Trust</i>	Kansas City MO
Provista	Irving, TX
Richard D. Smith & Sondra M. Langel	Wichita KS
Russel C. Leffel	Shawnee Mission KS
Security Bank of Kansas City*	Kansas City KS
Sisters of Charity*	Leavenworth KS
<i>The Stock Exchange Bank</i>	Caldwell KS
Will B. Tschudy	Olathe KS

**60+ year donor**  
 50+ year donor  
 40+ year donor\*

## Distribution of Funds

<u>College or University</u>	<u>Distribution</u>
Baker University	\$7,776
Benedictine College	\$7,900
Bethany College	\$5,345
Bethel College	\$6,343
Central Christian College of Kansas	\$5,410
Donnelly College	\$5,881
Friends University	\$7,398
Hesston College	\$5,015
Kansas Wesleyan University	\$5,963
Manhattan Christian College	\$5,341
McPherson College	\$5,427
MidAmerica Nazarene University	\$7,127
Newman University	\$8,338
Ottawa University	\$6,687
Southwestern College	\$5,561
Sterling College	\$5,351
Tabor College	\$5,410
University of Saint Mary	<u>\$6,383</u>
<b>Total Distributions</b>	<b>\$112,656</b>

Note: Cleveland University - Kansas City joined KICF in February of 2016. They will receive distribution funds beginning in 2017.

## Board of Trustees

Dr. Lynne Murray, Baker University  
 Stephen Minnis, J.D., Benedictine College  
 Mr. William Jones, Bethany College  
 Dr. Perry White, Bethel College  
 Col. Hal Hoxie, Central Christian College of Kansas  
 Dr. Carl Cleveland, Cleveland University-Kansas City  
 Msgr. Stuart Swetland, Donnelly College  
 Dr. Amy Bragg Carey, Friends University  
 Dr. Benjamin Sprunger, Hesston College  
 Dr. Matthew Thompson, Kansas Wesleyan University  
 Mr. Kevin Ingram, Manhattan Christian College  
 Dr. Michael Schneider, McPherson College  
 Dr. David J. Spittal, MidAmerica Nazarene University  
 Dr. Noreen Carrocci, Newman University  
 Mr. Kevin Eichner, Ottawa University  
 Dr. Brad Andrews, Southwestern College  
 Mr. Scott Rich, Sterling College  
 Dr. Jules Glanzer, Tabor College  
 Dr. Diane Steele, University of Saint Mary